

FLOWZONE[®]

OPERATION GUIDE

Model #: FZVAQP

STORM 2G[™]

5-POSITION VARIABLE PRESSURE
SWAPTANK[™] BACKPACK SPRAYER

2-GALLON TANK CAPACITY





ATTENTION

Please read the following information carefully. User must read and understand the entire manual before operating the sprayer. Failure to follow instructions or improper use could lead to sprayer failure and possible serious injuries.

- **DO NOT RETURN SPRAYER TO STORE.** If you experience issues or have questions, contact our Support Team M-F 9am-5pm EST at 1-803-339-2500 or email support@wessol.com.
- Never spray flammable, caustic, acidic, heat, pressure, or gas producing chemicals.
- Always read and follow chemical manufacturer's instructions before use with this sprayer as some chemicals may be hazardous when used with this sprayer.
- Never leave chemicals or solutions sitting in your sprayer after using.
- After using sprayer with chemicals, it is important to spray with fresh water for 3-5 minutes to ensure residual chemicals in the gun, wand, tank, pump, and hose are cleaned out.
- Read and follow all instructions and cautions on label of products used in this sprayer.
- Do not store your sprayer in extremely high temperatures. Heat can lead to the build-up of pressure within the sprayer, resulting in a possible explosion.
- Do not try to make modifications to the sprayer. Always use FlowZone® branded replacement parts from the manufacturer.
- Do not use batteries that are wet or have been damaged.
- Inspect sprayer hose, power knob, wand, and gun for damage or loose connections before each use.
- Do not lift or carry the sprayer by the hose, or wand. Carry by the handle only.
- Only spray when the air is calm (no wind or air movement) to prevent

chemical spray from drifting into unintended areas.

- Keep sprayer and all chemicals out of the reach of children.
- Remove chemicals and thoroughly clean the sprayer after each use. Failure to clean the sprayer may cause contamination of subsequent applications, will cause premature spray wear, and void the sprayer warranty.

NEVER spray petroleum oil distillates, or acetone through your sprayer. If using essential oils, thoroughly clean the sprayer after each use with warm, soapy water.

NOTES

- The sprayer may have residual water in it when first opened. This is due to quality testing every sprayer undergoes before leaving our factory.
- Some parts may be located under the tank lid when first assembling the sprayer.
- **THIS SPRAYER IS DESIGNED TO OPERATE WITH ONLY FLOWZONE® BRANDED BATTERIES AND ADAPTERS. ANY OTHER BATTERIES COULD CAUSE SERIOUS HARM OR INJURY TO THE OPERATOR AND SERIOUS DAMAGE TO THE SPRAYER.**

This product contains chemicals, including lead, known to the state of California to cause birth defects and other reproductive harm.



When using chemicals, always wear protective clothing, including respiratory protection masks, gloves, eye protection, etc.



Do not dispose of Lithium-ion batteries with household waste; recycle where facilities exist.

OPERATING

- Do not allow familiarity with products to make you careless. Remember that a single moment of carelessness is sufficient to cause serious injury.
- Always wear eye protection with side shields when handling or operating this sprayer. Failure to do so could result in serious injury from chemical contact or flying dirt or debris.
- The Lithium-ion battery pack can be used in temperatures down to 32°F. When operating in cold temperatures, put the battery pack in the battery compartment and use the sprayer in a light duty application. After about a minute the battery pack will warm up and begin operating normally.
- Always use the correct power setting for your application. Using the correct PSI and flow rate will result in a safer and more thorough treatment. For calibration resources please contact FlowZone® technical support. (Note: Always refer to local, state, and federal laws and regulations regarding your application.)
- Do not use the sprayer if the

power switch is not functioning correctly. Any power tool that cannot be controlled with the switch is dangerous and must be repaired.

- Remove battery before making any adjustments, changing accessories, or storing the sprayer. Disconnect the sprayer from the power source by removing the battery pack. These preventative safety measures reduce the risk of starting the sprayer accidentally.

STORING

- Store sprayer out of reach of children and do not allow persons unfamiliar with the power tool or these instructions to operate the sprayer. Power tools are dangerous in the hands of untrained users.
- Maintain sprayers and accessories. Check for misalignment or binding of moving parts, breakage of parts and any other condition that may affect the sprayers operation.
- Do not store sprayer in freezing temperatures, always be sure to store sprayer above 32°F.

SAFETY

- Use the sprayer and accessories in accordance with these instructions, taking into consideration the working conditions and the work to be performed. Use of this sprayer for applications that it was not intended for could result in a hazardous situation.
- Keep handles and lift points dry, clean and free from oil and grease. Slippery handles and lift points do not allow for safe handling and control of the sprayer.
- Risk of fire or explosion: Never use this sprayer with liquids such as gasoline, ethanol, methanol, or any other flammable or gas producing chemicals. Do not use sprayer around sparks, flame, or smoke. Failure to adhere to these instructions may cause ignition, resulting in potential injury and damage to property.
- To reduce the risk of fire, personal injury, and product damage from a short circuit, never immerse the sprayer, battery, or charger in fluids. Do not place or store sprayer where it could fall or be pulled into a tub or sink. Corrosive or conductive fluids, such as seawater, certain industrial chemicals, and bleach or bleach containing products, etc., can cause a short circuit.
- Electric shock hazard: Never spray toward electrical outlets.
- Spray area must be well ventilated to avoid hazardous fume build-up. Always refer to the product label of the chemical being used for safety instructions and proper use practices.
- Avoid spraying on windy days. Spraying in windy conditions could cause chemicals to be blown onto persons, plants, or objects that are not intended to be sprayed.

DO NOT RETURN SPRAYER TO STORE, if you experience problems or have questions contact our Customer Support, M-F 9am-5pm EST at **+1 803.339.2500**, or **email: support@wessol.com**, or find more information at **fzspray.com/troubleshoot**.

FZVAQP

SAFETY CONT.

- Do not store chemicals in the tank. Chemicals can degrade seals and hoses. Drain and clean sprayer after each use. Failure to do so may void the sprayer warranty.
- Remove gloves before handling battery pack. Chemicals may be damaging to plastics.
- Thoroughly inspect the interior, exterior, and all components of the sprayer before each use. Check for cracked and deteriorated hoses, leaks, clogged nozzles and missing or damaged parts. If damaged, ensure the sprayer is repaired before use. Many accidents are caused by poor maintenance.
- Always remove the battery pack from the sprayer before performing any maintenance, storing or draining of the sprayer.
- Do not eat or smoke while handling or operating the sprayer. Refer to the product label of the chemical being used for user safety practices.
- Do not use the battery compartment for storage.
- Always use common sense and be cautious when using the sprayer. It is not possible to anticipate every situation that could result in a dangerous outcome. Do not use this sprayer if you do not understand these operating instructions or if you feel the work is beyond your capability.
- Maintain labels and nameplates. These carry important information. If unreadable or missing, contact FlowZone® Support.

Manuals are subject to updates.
Scan the QR code to view the most updated manual online!



or visit: www.fzspray.com/pages/operation-guides

REGISTER YOUR SPRAYER!

To take advantage of the 1-year Limited Warranty from WESSOL, LLC. Register your sprayer at the website below:

fzspray.com/pages/register

Please read and follow this manual carefully to ensure that you get the most out of your new sprayer. If you need assistance with the assembly or operation of your sprayer, please don't hesitate to contact WESSOL via the support methods below:

fzspray.com

spraysquad@fzspray.com

FZVAQP

THE BATTERY

These batteries have been designed to provide maximum trouble-free life. However, like all batteries, they will eventually wear out. Do not disassemble battery pack and attempt to replace the batteries. Handling of these batteries especially when wearing rings or jewelry could result in serious burns.

- Recharge only with the charger specified by FlowZone®. A charger that is suitable for one type of battery pack may create a risk of fire when used with another batter pack.
- Only use sprayers specifically designated with their designated battery packs. Use of any other battery packs may create a risk of injury and fire.
- When battery pack is not in use, keep it away from other metal objects, like paper clips, coins, keys, nails, screws or other small metal objects, that can make a connection from one terminal to another. Shorting the battery terminals together may cause burns or fires.
- Under abusive conditions, liquid can be ejected from the battery; avoid contact. If contact accidentally occurs, flush with water. If liquid

contacts eyes, additionally seek medical help.

- Liquid ejected from the battery may cause irritation or burns.
- Do not use a battery pack or sprayer that is damaged or modified. Damaged or modified batteries may exhibit unpredictable behavior resulting in fire, explosion or risk of injury.
- Do not expose a battery pack or sprayer to fire or excessive temperature. Exposure to fire or temperature above 265°F (130°C) may cause explosion.
- Follow all charging instructions and do not charge the battery pack outside the temperature range specified in the instructions. Charging improperly or at a temperature outside the specified range may damage the battery and increase the risk of fire.

STORING BATTERY PACK LONGER THAN 30 DAYS

- Store the battery pack where the temperature is below 80°F and away from moisture.
- For long-term storage, regular charging of the battery is required

to maximize battery life. Check the battery level using the indicator lights every 4 weeks. Recharge the battery if it falls below 3 bars.

- Do not allow the battery to fully discharge.

BATTERY RECYCLING PREPARATION

- To preserve natural resources, please recycle or dispose of the batteries properly.
- This product contains Lithium-ion batteries. Local, state or federal laws may prohibit disposal of lithium-ion batteries in ordinary trash. Consult your local waste authority for information regarding available recycling and/or disposal options.

LITHIUM-ION BATTERY PACKS

- Lithium-ion batteries deliver fade free power for their entire run time. Lithium-ion batteries will not gradually lose power due to decreasing battery charge.

Instead, power from the battery pack will drop from full to zero once the full charge has been drained from the battery. Once this happens, recharging of the battery is required.

BATTERY PACK PROTECTION FEATURES

- Lithium-ion battery packs are designed with features that protect the lithium-ion cells and maximize battery life. If the sprayer stops during use, release the trigger to reset and resume operation. If the sprayer still doesn't work, the battery needs to be recharged.

If after 2 hours during the charging process, none of the LEDs are lit, remove the battery pack from the charger to avoid damaging the product. DO NOT insert another battery. Contact Customer Support for instructions on replacing the battery.

CONTENTS:

ABOUT

- 07 Specifications
- 08 What's Inside
- 09 Parts Diagram

SET UP

- 10 Sprayer Assembly
- 17 How to Spray
- 19 Aftercare

TROUBLESHOOT

- 20 Common Solutions
- 22 Parts & Accessories
- 25 Warranty

FZVAQP

WHAT IS YOUR SPRAYER CAPABLE OF?

This FlowZone® sprayer is a highly efficient sprayer that is suitable for spraying many kinds of chemicals and solutions.

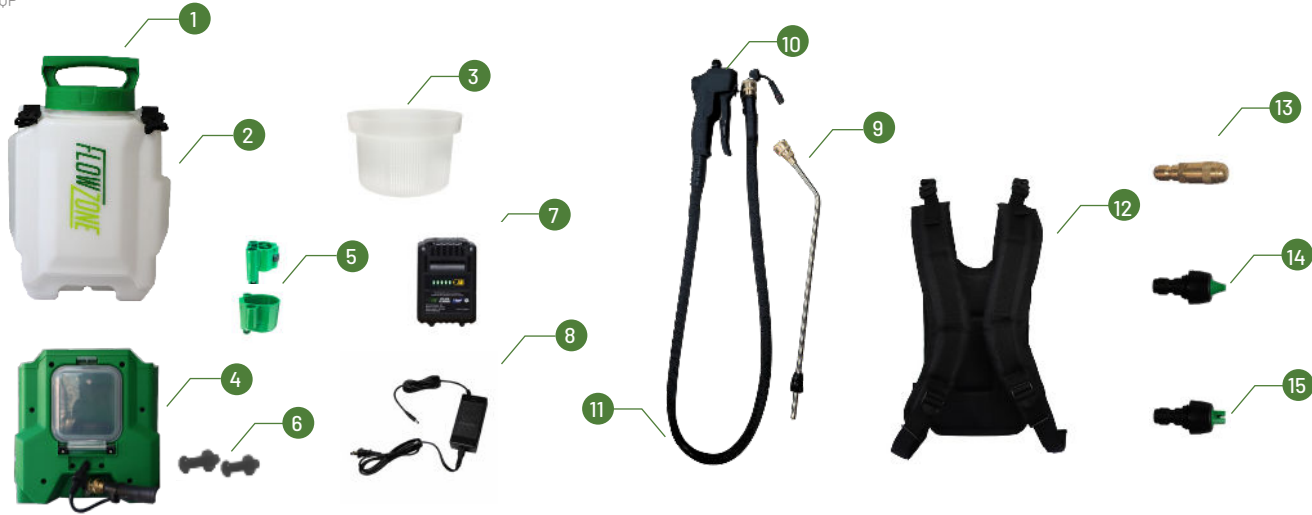
The all-new backpack Storm™ 2-Gallon battery sprayer allows for both high and low output capability. Applicators can spray anywhere between 0.05 to 1.1 gallons per minute with any nozzle tip. Ideal for any high-output spray application as well as spot / precision spray jobs.

FlowZone® STORM 1G™ Specifications

Model Number	FZVAQP	Pump Type	Heavy-duty Recirculating Pump
Battery Type	Lithium-ion	Spray Time	Up to 3 hours
Battery Voltage	18V	Pressure	Up to 115 psi
Battery Capacity	5.2Ah	Spray Distance	>30 feet
Battery Charging Time	2 hours	Tank Capacity	2 gallon
Battery Cycle Life	1,000 cycles	Flow Rate	0.05-1.10 gal/min
Battery Charger	21V/2.5Ah	Pump Life	750 hours



FZVAQP



WHAT'S INSIDE

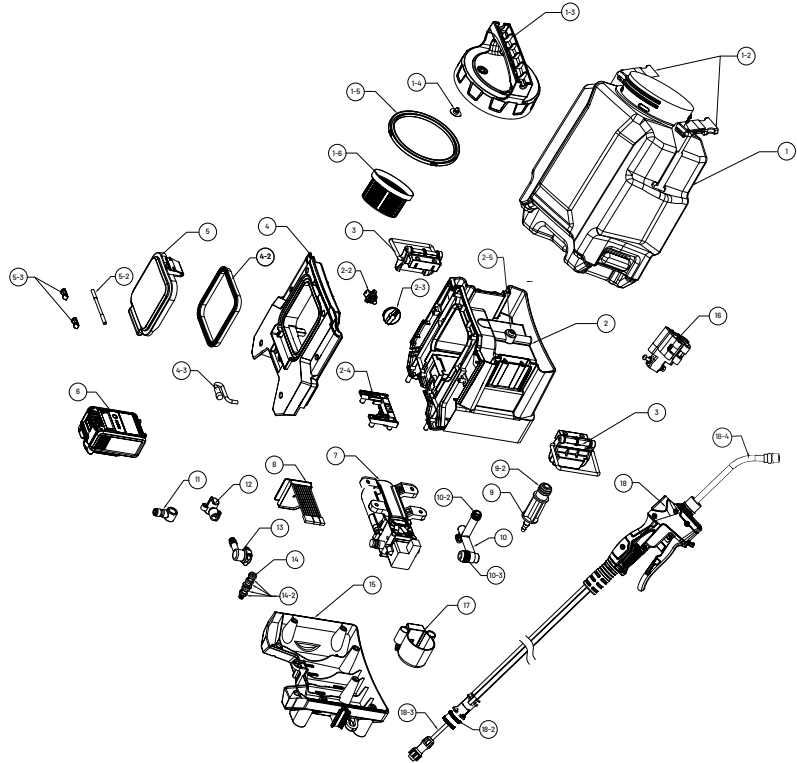
For part numbers and replacement parts please see page 14.

Part	Name	Part	Name	Part	Name
1	Tank Lid	7	18V/5.2Ah Battery Pack	13	Adjustable Cone Nozzle
2	2-Gallon Tank	8	21V/2.5A Battery Charger	14	0° Pin Stream Nozzle
3	Tank Strainer	9	Stainless Steel Wand w/ 45° Bend	15	45° Fan Nozzle
4	Base Assembly	10	Inline Spray Handle		
5	Top & Bottom Holster	11	UV-Resistant 4-Ft Hose		
6	Nuts & Bolts	12	ComfortStraps™		

FZVAQP

SPRAYER DIAGRAM & Replacement Parts

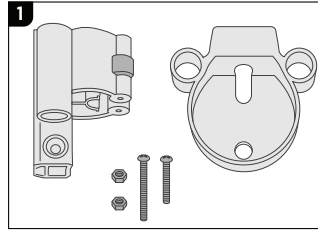
		Available for Purchase	
	Assemblies / Kits	Replacement Part	
1			2-Gallon Tank
1-2			Female Buckle
1-3	FZAARO	FZRARV	Lid with Wand Holder
1-4	Tank Assembly		One Way Seal
1-5		FZRACK	Tank Lid Gasket
1-6		FZBRBW	Tank Strainer
2			Upper Base
2-2			Switch
2-3			Variable Pressure Dial
2-4			Battery Holster
2-5		FZRASJ	Swap Tank™ Viton Gasket
3		FZRASA	SwapTank™ Latch Kit
4			Front Cover
4-2			U-Shaped Sealing Strip
4-3			Pigtail Electrical Connector
5			Battery Door
5-2		FZRARX	Door Pivot
5-3			Door Pivot Clamp
6	FZRAU	FZAAEM	Battery Pack
7	Base Assembly		Recirculating Pump
8			Circuit Board
9			Water Suction Port
9-2			O-Ring
10			Inlet Tube
10-2		FZRARZ	Spring
10-3			Spring
11			Hose Quick Connect Adapter
12			Pump Outlet Connector
13		FZRASK	Nut Adapter
14			Male Tank Connector
14-2			O-Ring
15			Lower Base
16	FZAAON	FZRANL	Top Holster
17	Holster Kit	FZRANK	Bottom Holster
18			Inline Gun
18-2	FZRAQX-V4		Hose
18-3	Wand Assembly		Steel Cable
18-4		FZRASH	Dripless Wand with 45° Bend



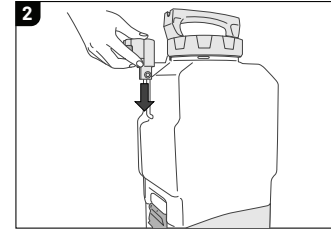
GETTING STARTED

Setting up your sprayer

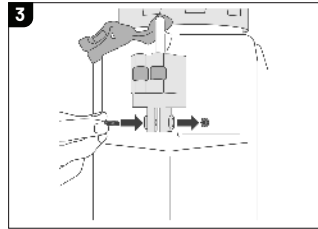
NOTE: The sprayer may have residual water in it when first opened. This is due to quality testing every sprayer undergoes before leaving our factory.



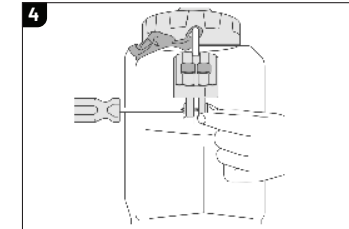
1 Locate wand holsters, nuts, and bolts (inside tank lid or battery compartment).



2 Slide the top wand holster onto the extrusion channel on the right side of the tank.

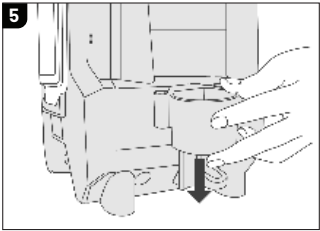


3 Insert the shorter bolt through the front opening on the holster, and place the nut in the hexagonal opening on the backside of the wand holster.

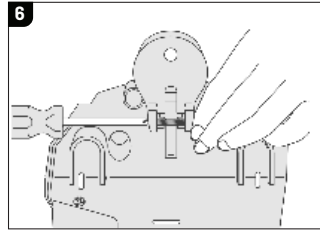


4 Use a Phillips-head screwdriver to tighten the bolt into the nut.

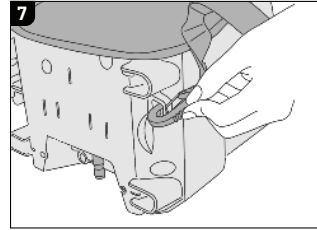
FZVA0P



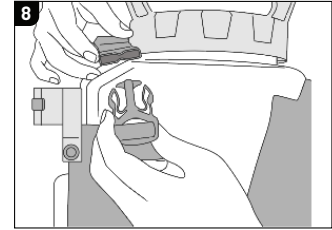
Slide the bottom wand holster onto the extrusion channel on the right side of the tank base.



Insert the longer bolt through the front opening on the holster, and place the nut in the hexagonal opening on the backside of the wand holster. (tip: turn sprayer on it's side for easier assembly)

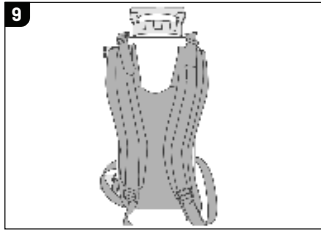


To connect ComfortStraps™ backpack straps, connect each bottom strap clip.

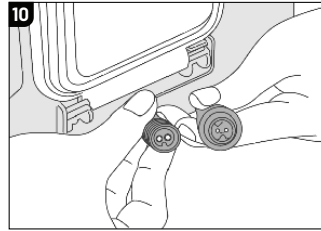


Attach both shoulder strap male buckles to the female buckles on the SwapTank™.

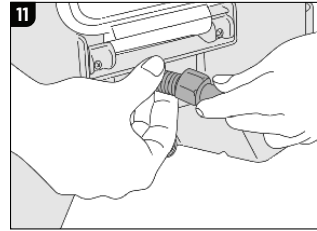
FZVA0P



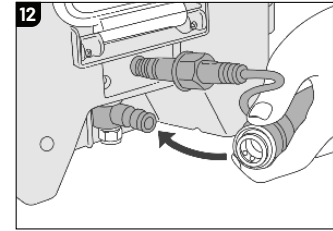
Adjust shoulder straps to a comfortable position.



Identify the 2-prong male electrical connector at the end of the hose / gun / wand assembly and align it to the female pigtail connector on the sprayer base.

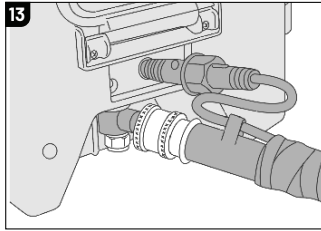


Insert the 2-prong male electrical connector and tighten the cap onto the female pigtail connector.

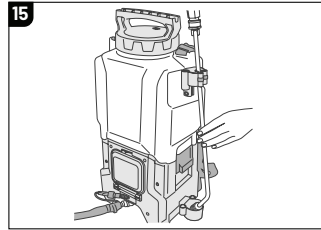
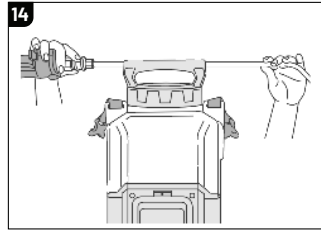


Pull down on the female brass quick-connect hose collar and tighten the cap onto the female pigtail connector.

FZVAQP



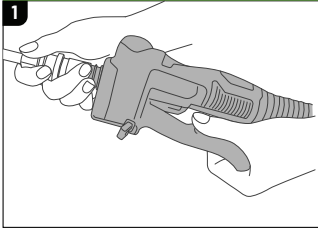
13 Insert the female brass quick-connect hose collar onto the plastic male quick-connect on the sprayer base and release the collar.



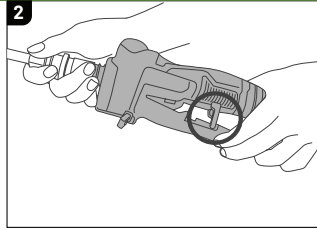
14 Store the hose / gun / wand assembly in the side wand holsters or the lid wand holster.

FZVAQP

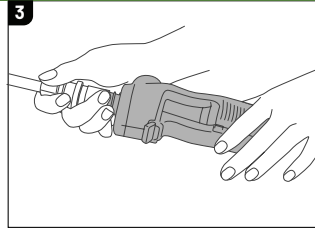
Inline Spray Handle Operation



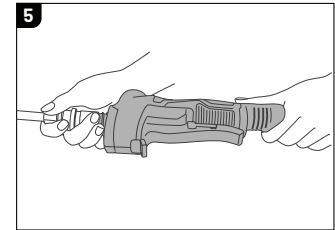
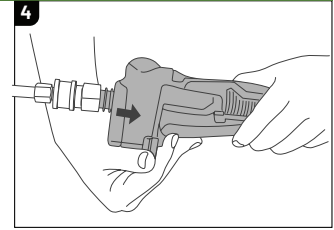
1
Locate the trigger storage locking pin on the backside of the spray trigger.



2
Open the locking pin fully to prevent the trigger from being pulled. This is the ideal storage position.



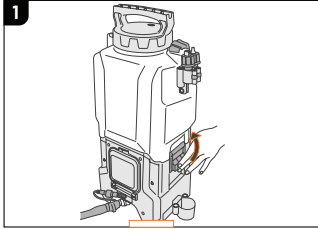
3
To lock the spray handle into a continuous spraying position, start by squeezing the spray trigger handle into the spray position.



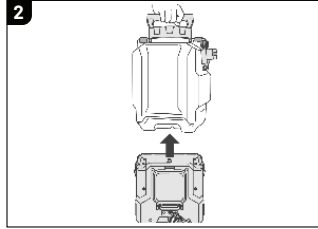
4
5
While holding down the spray trigger handle, pull the locking tab towards the spray trigger handle. This will hold the trigger handle in the spraying position. Push the locking tab back upwards to control the trigger handle again.

FZVAQP

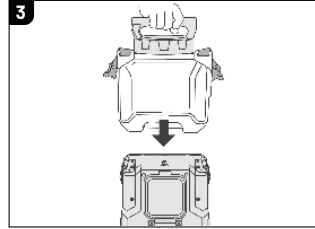
SwapTank™ Operation



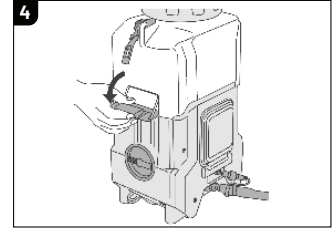
To remove the SwapTank™ assembly, begin by unclipping the shoulder strap from the tank. Pull upwards on each latch assembly. Guide the metal bar away from the tank indentation.



Once both latches are released, pull the tank upwards from the base.



Refill original tank or use secondary pre-filled SwapTank™ and place it into the base assembly.



Guide the metal bars to the indentation in the tank. Pull each latch assembly downwards to lock the SwapTank™ into place.

FZVAQP

Storm™ 2-Gallon Flow Rate & Pressure Chart

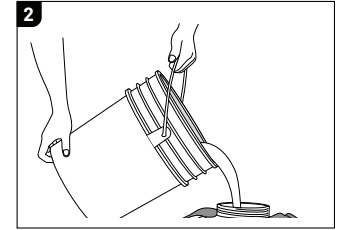
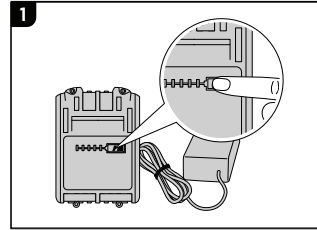
Nozzle	Speed 1		Speed 2		Speed 3		Speed 4		Speed 5	
	Flow Rate (GPM)	Pressure (PSI)	Flow Rate (GPM)	Pressure (PSI)	Flow Rate (GPM)	Pressure (PSI)	Flow Rate (GPM)	Pressure (PSI)	Flow Rate (GPM)	Pressure (PSI)
Brass Adjustable Nozzle (Misting Cone Position)	0.42	20	0.46	39	0.55	55	0.59	65	0.63	75
Brass Adjustable Nozzle (Jet Stream Position)	0.48	22	0.57	26	0.66	36	0.70	44	0.77	51
0° Pin Stream Nozzle	0.42	30	0.60	45	0.66	60	0.68	67	0.71	70
45° Fan Nozzle	0.42	30	0.63	55	0.68	60	0.68	62	0.71	65



Note: Actual spraying pressure and flow rates may vary. It is always a good idea to calibrate your sprayer prior to use.

SPRAYING

Preparing to spray



Although the battery (7) may be partially charged upon delivery, it is essential to fully charge the battery prior to the first operation. An indicator light should flash while the battery is plugged in and charging.

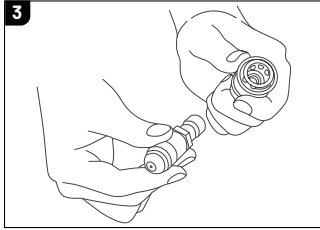
The charge level can be viewed by activating the indicator lights on the battery by pressing on the battery icon.

In a separate container, prepare the solution you wish to spray according to the chemical manufacturer's instructions. Remove the tank lid and carefully pour the solution through the tank strainer. Securely tighten the tank lid.

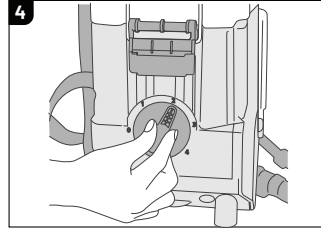


When using chemicals, always wear protective clothing, including respiratory protection masks, gloves, eye protection, etc.

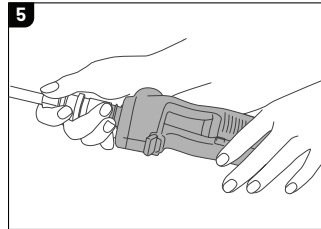
FZVAQP



Determine the nozzle you would like to use and insert it into the spray gun or spray wand by pulling back on the quick-connect fitting. Once the nozzle is in place, push the collar back to its original position. General flow rates for each nozzle can be found on page 15.



Turn the pump on by rotating the variable-pressure dial clockwise to the desired position. Reference flow rate and spraying pressure chart on Page 15.



To begin spraying, simply hold down the trigger on the spray gun.

Priming your sprayer

NOTE: Although rare, when spraying for the first time or after storing the sprayer for an extended amount of time, the sprayer may need help priming. If the sprayer turns on and you can hear the pump running, but no liquid is passing through the sprayer, you will need to manually prime the sprayer according to the steps below:

1. With the sprayer off, remove the battery and make sure the battery cover is shut.
2. Remove the tank lid and take the tank strainer out to reveal the inside of your sprayer tank.
3. Locate the inlet filter at the bottom of the sprayer tank (See diagram 3 on page 15 for a visual representation). Gently wiggle the inlet filter until it comes apart from the pump connection. Set aside.
4. Using a garden hose or similar delivery method, rapidly run clean water into the connection where the inlet filter was.
5. Reinstall the inlet filter with the mesh screen facing the bottom of the tank, fill the sprayer with some water, and insert a charged battery. Test the sprayer by activating the spray trigger.



Scan for video instructions or visit
<https://fzspray.com/pages/troubleshoot#priming-sprayer>

AFTERCARE

Sprayer maintenance

CAUTION: Failure to properly rinse out the sprayer may cause chemical residue build-up that can clog or damage internal and external components. Leaving chemical liquids in the sprayer when not in use can lead to premature wear and voiding of the warranty. Never store the sprayer with chemical inside.

1. With the sprayer off, dispose of extra product based on the manufacturer's instructions. Rinse out any residual solution in the spray tank with warm soapy water. Then, spray fresh water through the sprayer for 3-5 minutes to clear the sprayer of chemicals.
2. Disconnect the hose from the sprayer, hold the handle in the air and squeeze the trigger to open the valve and release the liquid from the wand.
3. Thoroughly dry the sprayer tank and clear the nozzles and inlet filter of any build-up.
4. Store the sprayer in a dry, clean, and shaded place to protect it from extreme heat or frost.

Cleaning the inlet filter

NOTE: It is recommended you clean your inlet filter at least every other time your sprayer is used. Buildup at the inlet filter can cause damage to the pump and reduce spraying pressure.

1. With the sprayer off and battery removed, take off the tank lid.
2. Lift the tank strainer out of the mouth of the sprayer tank and set aside.
3. Reach into the sprayer tank and gently pry the inlet filter from the pump connection at the bottom of the tank.
4. Rinse the inlet filter with fresh water and get rid of any debris or particles.
5. Taking a clean cloth, wipe down the filter screen and dry the inlet filter. Reassemble the sprayer with the inlet filter and store the unit in protected area.

NOTE

For long-term storage, regular charging of the battery is required to maximize battery life. Check the battery level using the indicator lights every 4 weeks. Recharge the battery if it falls below 3 bars. Do not allow the battery to fully discharge.

TROUBLESHOOTING

If your sprayer is not turning on, visit fzspray.com/troubleshoot for detailed instructions on how to determine which part is not functioning as it should.

To contact Technical Support, email support@wessol.com or call **+1 (803) 339-2500**.

Problem	Possible Cause(s)	Solution
Sprayer does not turn on.	Dead battery	Charge the battery. If the battery will not charge, test the charger or contact Support for a replacement if applicable.
	Defective or damaged part	Follow the instructions at fzspray.com/troubleshoot or contact Support for guidance.
Leaks from tank.	Loose hose connection	Remove the plastic back plate and locate the hose connection to the pump. Tighten the hose clamp.
Leaks from gun/nozzle.	Loose hose connection	Ensure the spray gun is fully tightened onto the threaded end of the hose.
	Missing or worn gasket	Locate the necessary part from page 14 and contact Support or visit fzspray.com to purchase.
Clogged pump / hose / gun / wand / nozzle	Not rinsing parts with water after use.	Take apart and thoroughly clean the parts. Rinse the sprayer with warm, soapy water after each use. Clean the pump inlet filter inside tank.

FZVAQP

Problem	Possible Cause(s)	Solution
Dead battery.	Defective charger	If the LED indicator lights do not turn on or only one red LED is on after being on the charger for over 2 hours, test the charger with a multimeter. Replace if necessary.
	Damaged Lithium-Ion cells	If the battery receives no reading from a multimeter, a replacement battery is needed.
Pump makes a sound when sprayer is on, but output is limited.	Clog in filter or nozzle	Check parts for a clog. Using warm water, thoroughly clean the components; including pump inlet filter inside the tank.
	Clog in the pump	Remove the plastic cover plate and locate the pump. Remove then open the pump and clean out debris. Contact Support for assistance.

ACCESSORIES & PARTS

Included with sprayer



FZAASG
ComfortStraps™
Backpack straps



FZAAEM
Li-Ion TRI-ZONE™
Battery Pack



FZAAEL
21V/2.5A
Quick-Charger



FZRA0X-V4
Spray Gun



FZRARU
Replacement Base
Assembly



FZAAOL
Adjustable
Cone Nozzle



FZAAAM
45° Fan Nozzle



FZAAOK
0° Pin Stream
Nozzle



FZAARO
SwapTank™ 2-Gal
Tank Assembly



FZRASA
SwapTank™ Latch
Kit

Nozzles



FZAAALV
5-in-1 Nozzle



FZAAASW
Brass TeeJet®
Style Nozzle
Bundle



FZAAAP
Quick-Connect 0°
Pin Stream Nozzle



FZAAAQ
Quick-Connect 25°
Fan Nozzle



FZAAAR
Quick-Connect
Adjustable Nozzle

Accessories and replacement parts can be purchased at your preferred distributor or online at fzspray.com.

FZVAQP

Miscellaneous



FZAAMO
ComfortStraps™
Nozzle Holder



FZAAOX
Drift Guard w/ 110°
TeeJet® Nozzle



FZAANE
Wand/Nozzle
Flashlight Mount



FZAARP
SwapTank™ 1-Gal
Tank Assembly



FZAAMP
TeeJet Nozzle
Assembly PVC
Gaskets

Replacements



FZRASK
Base Hose
Connection
Assembly



FZRARX
Battery Door
Assembly



FZRACK
Tank Lid Gasket



FZRACL
Viton Pump Inlet
Gasket



FZRARZ
Stainless-Steel
Pump Inlet Filter



FZRABW
Tank Strainer



FZRANL
Wedge-Lock Top
Wand Holster



FZRANK
Wedge-Lock
Bottom Wand
Holster

WARRANTY

WARRANTY COVERAGE

WESSOL, LLC warrants to the original purchaser that the FlowZone® product will function as intended under normal use and consistent maintenance, subject to certain limitations and exclusions. At the discretion of WESSOL, LLC, we will repair or replace any parts found to be defective in material or workmanship without charge, apart from shipping and handling costs, during the covered warranty period.

WARRANTY PERIOD

The warranty period will begin from the date of retail purchase and exist for one (1) year, regardless of when the unit is placed in service. The warranty period is not extended if we opt to repair or replace the product in question.

WARRANTY CLAIMS

WESSOL, LLC reserves the right to require the return of the defective product, proof of purchase, and established product registration to file a claim under this warranty.

PRODUCT REGISTRATION

All sprayers purchased from FlowZone® or an authorized distributor must be registered online to validate the warranty and allow for warranty claim processing. Sprayers can be registered at fzspray.com/pages/register.

All sprayers purchased from FlowZone or an authorized distributor must be registered online to validate the warranty and allow for warranty claim processing. Sprayers can be registered at fzspray.com/register.

To activate the warranty on your sprayer, register it at fzspray.com/register. If the product fails to function as intended **DO NOT RETURN IT TO THE STORE**. To view the complete warranty or submit a claim, visit fzspray.com/warranty.

EXCLUSIONS AND LIMITATIONS

WESSOL, LLC only warrants products purchased from authorized distributors. Products purchased from unauthorized resellers or distributors are not subject to warranty services.

The limited warranty does not cover damages, loss, or injury resulting from transportation, storage, accident, improper use, neglect, modifications, normal wear, or operation not in accordance with the instruction manual. WESSOL, LLC reserves the right to change the design or specifications of any product without obligation to modify previously produced units.

ANY IMPLIED WARRANTIES, INCLUDING THE IMPLIED WARRANTY OF MERCHANTABILITY AND FITNESS FOR CONSUMER USE, ARE LIMITED TO THE DURATION SPECIFIED ABOVE. WESSOL, LLC'S LIABILITY IS LIMITED SOLELY TO THE REPAIR OR REPLACEMENT OF THE NON-FUNCTIONING PRODUCT OR PART. WESSOL, LLC EXCLUDES LIABILITY UNDER THIS WARRANTY FOR ANY AND ALL INCIDENTAL AND CONSEQUENTIAL LOSS OR DAMAGE.

In no event shall WESSOL, LLC be liable for any incidental, special, consequential or punitive damages, or for any costs, attorney fees, expenses, losses or delays alleged to be as a consequence of any damage to, failure of, or defect in any product including, but not limited to, any claims for loss of profits.

Some states do not allow limitations on how long an implied warranty lasts, or the exclusion or limitation of incidental or consequential damages, so these limitations or exclusions may not apply to you. This warranty gives you specific legal rights and you may have other rights which vary from state to state.



fzspray.com

spraysquad@fzspray.com

CONNECT WITH US:



@FZSprayer



@FZSpray



@FlowZoneSprayer